

Accommodation available across the Midlands

Derby

Southgate Court, Uttoxeter Old Rd
Peak View & Carsington House, Allestree
Thomas Court, Uttoxeter New Road
Manor Park Court, opposite City Hospital

Chesterfield

Manvers Court, Newbold Road

Sheffield

Columbia Place, Suffolk Road

Nottingham

Regent Mews, Wollaton Street
Century Court, North Sherwood St
The Farthings, Faraday Rd, Lenton

Loughborough

Grand Union Gardens, Nottingham Road

Leicester

Waterway Gardens, Western Boulevard

Residential Lettings
Derwent Living
No.1 Centro Place
Pride Park
Derby
DE24 8RF

Tel 01332 346477
Fax 01332 295025
lettings@derwentliving.com
www.derwentliving.com

No. 1 Centro Place
Pride Park Derby DE24 8RF

01332 346477
www.derwentliving.com
Info@derwentliving.com



Nottingham University Hospitals **NHS**
NHS Trust

Queen's Medical Centre Campus



Derwent living

The Farthings

**Raleigh Park
Faraday Road
Lenton**

Nottingham University Hospitals **NHS**
NHS Trust

Queen's Medical Centre campus



Tel: 0115 924 6822

Fax: 01159 702626

Curie Court (Block E11)
Queens Medical Centre
Nottingham
NG7 2UH
NUHStaff@derwentliving.com

Raleigh Park, Faraday Road is a large accommodation complex near to the Queen's Medical Centre, approximately one mile from the heart of Nottingham City centre and ten minutes walk from the hospital main entrance.

Completed in 2002, Raleigh Park comprises first class spacious and bright apartments, Raleigh Park is managed by Derwent Living, providers of quality accommodation since 1964. With a vast experience of property management we bring with us experience and care to those who need a comfortable safe and friendly environment to live in.

The accommodation for Queen's Medical Centre staff at The Farthings comprises of:

4 bed cluster flats – comprising en-suite bedroom with other facilities shared by three others

3 bed cluster flats – comprising single study bedroom with all facilities shared by two others

2 bed cluster flats – comprising single study bedroom with all facilities shared by one other

1 bed self-contained flat - comprising single bedroom, bathroom and dining kitchen / lounge area.

Derwent living does not provide cutlery, crockery, kitchen utensils, linen or a laundering service. Please make your own arrangements regarding these items. The on site laundrette is located on the ground floor next to block A1 and is accessible 24 hours a day.

Estates Office - Faraday Road
Mon to Thurs 9am-12noon & 2pm-5pm
Friday 9am-12noon & 2pm-4pm

The on site staff consists of a Facilities Team Leader and she is assisted by three site reps and student reps, if you ever have any problems with your property please let a member of staff know and we will try our best to resolve the situation.

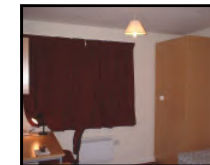
Accommodation Office at Queen's Medical Centre
8am to 4:30 pm Monday to Friday

An Accommodation Manager, and two Accommodation Officers, staff the office, which is situated at Curie Court in the centre of the residences complex.

Our telephone number is 0115 9249924 Ex.62678, or you can Fax us on 0115 9702626.

Further information and Viewings

If you would like any further information or would like to arrange to view the accommodation please contact our Residences Staff at Queen's Medical Centre on the below number.



Derwent Living

Curie Court (Block E11)
Queens Medical Centre
Nottingham NG7 2UH

Phone: 0115 924 9924 ext. 62678

Fax: 0115 9702626

Email: QMCStaff@derwentliving.com